



eol-group.net

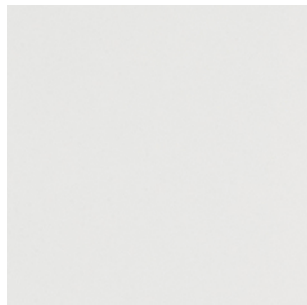
EDITION 01

# MELAMINE & METAL

NUANCIER - SHADE CARD - KLEURENKAART

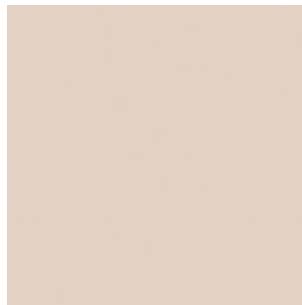
## MELAMINE

MG



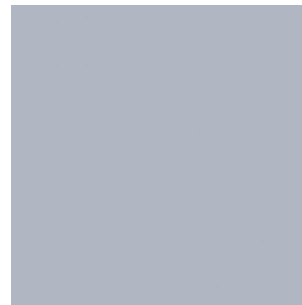
EGGER W980 SM

M6



EGGER U702 ST9

MU



EGGER F509 ST2

MA



EGGER H1733 S19

R2



EGGER H1582 ST15

RI



EGGER H1334 ST9

R3



PFLEIDERER R20074 RU

RL



EGGER H3775 ST12

M9



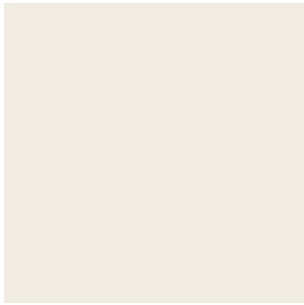
PFLEIDERER R20065 NW

new

MG | Blanc neige, Snow white, Sneeuw wit • M6 | Gris cachemire, Cashmere grey, Kasjmier grijs • MU | Gris aluminium, Aluminium grey, Alugrijs • MA | Érable blanc, White maple, Wit esdoorn • R2 | Hêtre de Honfleur, Honfleur Beech, Beuk van Honfleur • RI | Chêne clair, Light oak, Licht eiken • R3 | Chêne brunswick, Brunswick oak, Brunswick eik • RL | Noyer ambré, Amber walnut, Amber notenhout • M9 | Chêne café, Colombian Oak, Eik koffie bruin •

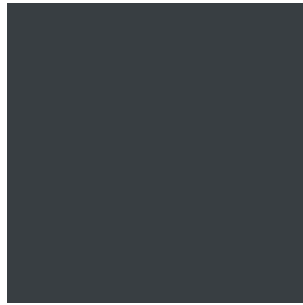
## METAL

SO



RAL 9010

X1



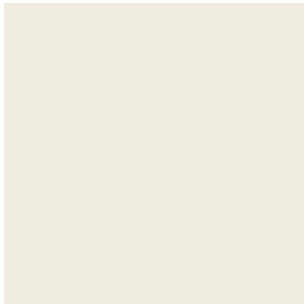
RAL 7016

SG



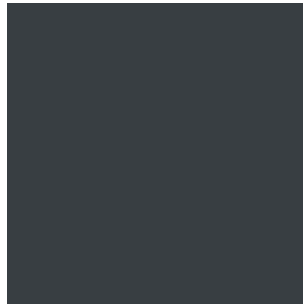
RAL 9005

ZO



RAL 9010

SC



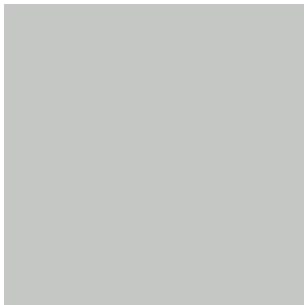
RAL 7016

ZP



RAL 9005

SD



RAL 7035

SA/SB



RAL 9006

SU



SPÉCIFIQUE

SO | Blanc, White, Wit • X1 | Gris anthracite, Anthracite grey, Antracietgrijs • SG | Noir, Black, Zwart • ZO | Blanc structuré, Structured white, Gestructureerd Wit • SC | Gris anthracite structuré, Textured graphite grey, Gestructureerd antraciet • ZP | Noir structuré, Textured Black, Gestructureerd zwart • SD | Gris clair, Light grey, Lichtgrijs • SA/SB | Gris aluminium, Aluminium grey, Alugrijs • SU | Gris souris, Textured mouse grey, Muis grijs •



eol-group.net